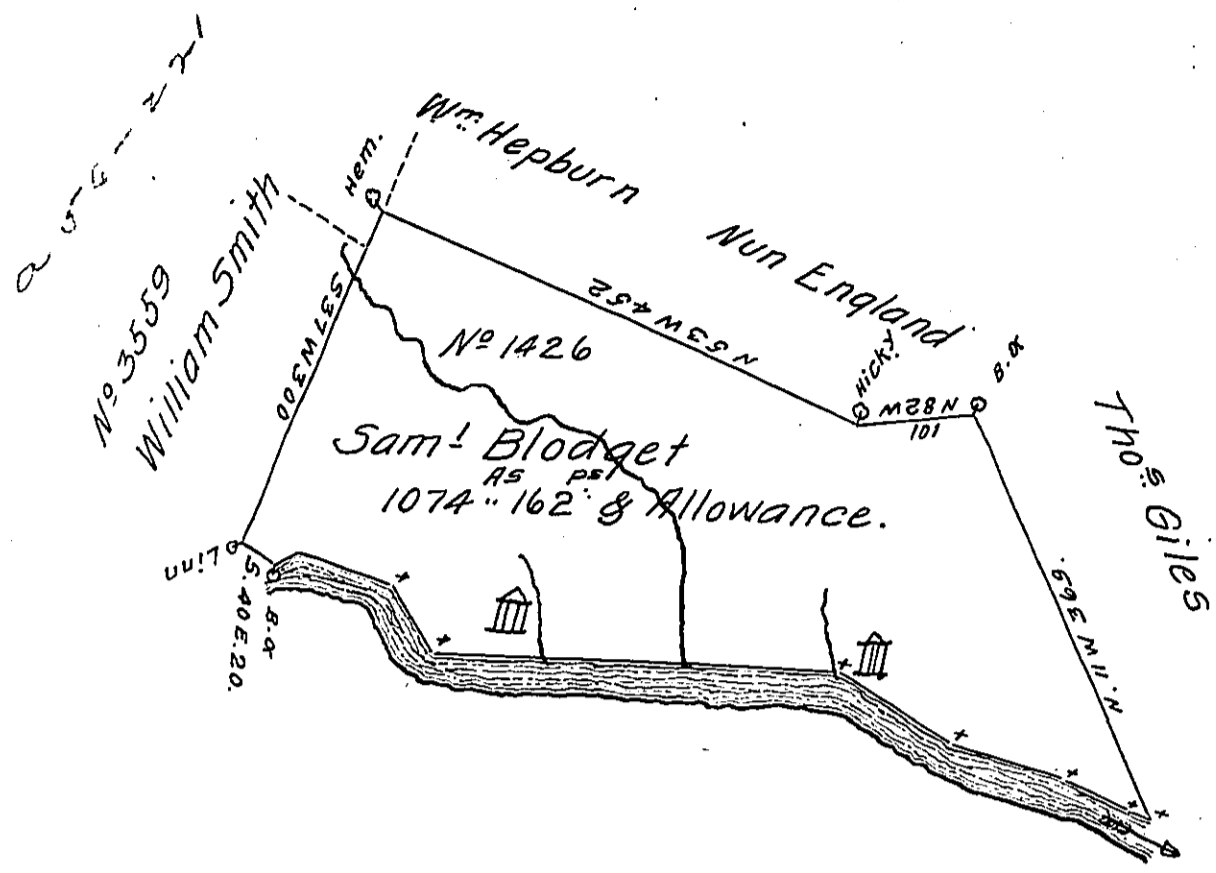


Course & Distance Down the River from the Black Oak Corner.

N 80 E 18
S 60 E 92
S 16 E 66
S 75 E 350
S 45 E 114
S 60 E 102
S 50 E 70
S 78 E 16



Surveyed November 1st 1807 the above tract of land for the heirs of
 & others
 D. Smith Charles Smith on an Order of Resurvey on Warrant
 No 1426 containing one thousand and seventy four Acres and one
 hundred and sixty two perches and allowance &c. Situate on the
 North side of the West branch of Susquehanna, late Purchase
 Clearfield County.

To Saml Cochran Esquire } Saml Stewart D.S.
 Surveyor General }

Warrant to Saml Blodget Junr dated 7th May 1792.

N.B. These ~~III~~ ~~III~~ marks in the above draft represents David Fer-
 guson's and James Hutchinson's improvements.

Saml Stewart D.S.

IN TESTIMONY that the above is a copy of the original remaining on file in
 the Department of Internal Affairs of Pennsylvania, made
 conformably to an Act of Assembly approved the 16th day of
 February, 1833, I have hereunto set my Hand and caused
 the Seal of said Department to be affixed at Harrisburg,
 this thirteenth day of December 1910.

Henry Houck

Secretary of Internal Affairs.